



Grade LEVEL 4 - (ART)
Topic Outline
SY 2021 - 2022

Teacher: Chantal Mantalaba

CULTURAL COMMUNITIES IN THE PHILIPPINES

I. Drawing (digital and non-digital)

- Figures from cultural communities
- Crayon etching of ethnic designs
- Stylized shapes
- Rhythm, repetition and motifs

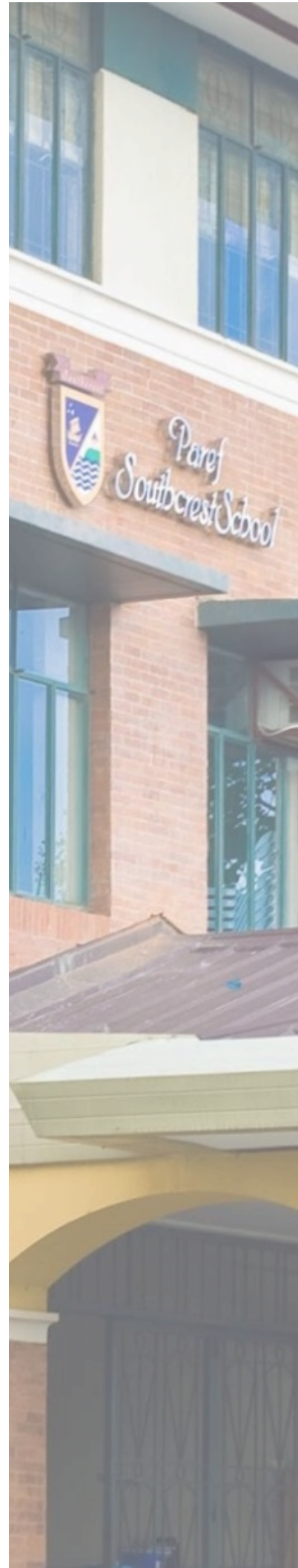
II. Painting

- Using colors to show mood
- Relationship between sky and ground by horizontal space division – comparing background to foreground to achieve spatial relationship
- Landscape in a province (indigenous houses)
- Rich variety of cultural communities in the Philippines and their uniqueness:
- Luzon – Ivatan, Ifugao, Kalinga, Bontok, Gaddang, Agta
- Visaya – Ati
- Mindanao – Badjao, Mangyan, Samal, Yakan, Ubanon, Manobo, Higaonon, Talaandig, Matigsalug, Bilaan, T'boli, Tiruray, Mansaka, Tausug
- Specific clothing, objects and designs of the cultural communities
- Localities where different cultural communities live and understands that each group has distinct houses and practices
- Cultural communities in the Philippines need to be honored and appreciated by present day Filipinos, since culture will disappear it is not protected and preserved

III. Printmaking

- Found object prints
- Scratch foam prints
- Glue prints
- Repetition of motifs and color
- The principle of relief prints – the embossed textured shapes will be printed while the depressed parts will serve as empty space providing contrast
- Relief prints are more interesting and harmonious if there is a balance of textured areas and smooth areas: big shapes and small shapes
 - Ethnic designs from the Philippine cultural communities can be used to make contemporary reliefs and prints for decoration of walls / textiles

IV. Cutting and 3D crafts





PAREF Southcrest

Grade LEVEL 4 - (ART)

Topic Outline

SY 2021 - 2022

Teacher: Chantal Mantalaba

- Cutting complex shapes
- Border design
- Contrast of light and dark colors
- Pop up card

