



## Grade LEVEL 6 - (Science)

### Topic Outline

First Quarter - SY 2021 - 2022

Teacher: Ana Rose P. Benolirao

---

#### I. Mixtures and Characteristics

- A. Homogeneous and Heterogeneous Mixtures
- B. Types of Mixtures
  - Periodic table of elements
- C. Common Laboratory Apparatus
- D. Ways of Separating Mixtures

#### II. Scientific Method

- A. Scientific Notation
- B. Scientific Figures
- C. Conversion

#### III. Human Body Systems

- A. The Musculoskeletal System
- B. The Integumentary System
- C. The Digestive System
- D. The Respiratory System
- E. The Circulatory System
- F. The Nervous System

#### IV. Scientific Method

- A. Science Investigatory Project
  - 1. Parts
  - 2. Construction

#### V. Animals and Their Classification

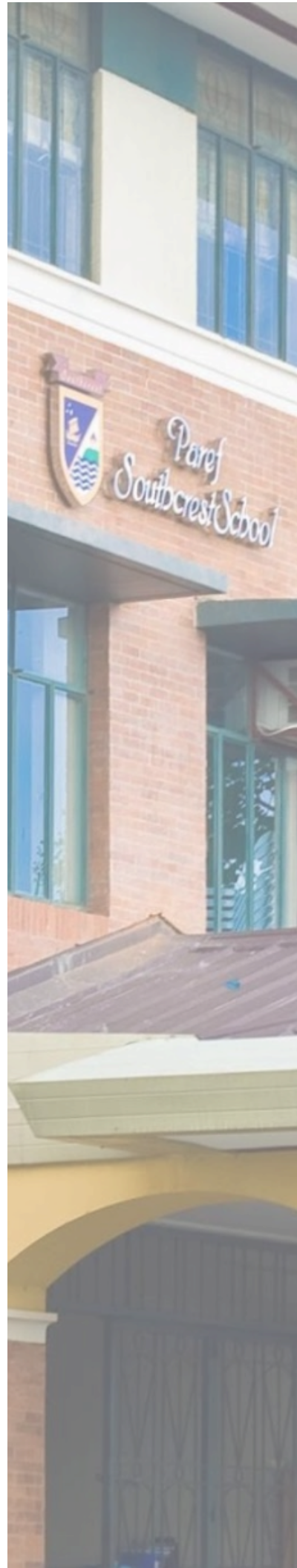
- A. Vertebrates and Invertebrates

#### VI. Plants and Their Reproduction

- A. Spore Bearing and Cone Bearing Plants
- B. Vegetative Propagation of Plants

#### VII. The Ecosystem

- A. The Physical Condition of the Ecosystem
- B. The Interactions in Ecosystems





**Grade LEVEL 6 - (Science)**

**Topic Outline**

**First Quarter - SY 2021 - 2022**

**Teacher: Ana Rose P. Benolirao**

---

- VIII. Gravitational and Frictional Force**
  - A. Gravitational Force
  - B. Frictional Force
  
- IX. Energy, Work, and Machines**
  - A. Energy and Its Forms
  - B. Transformations of Energy
  - C. Simple Machines
  
- X. Earthquakes and Volcanic Eruptions**
  - A. Earthquake and Plate Boundaries
  - B. Volcanic Eruptions
  
- XI. Philippine Weather and Seasons**
  - A. Weather
  - B. Seasons in the Philippines
  - C. Earth's Rotation
  - D. Earth's Revolution

